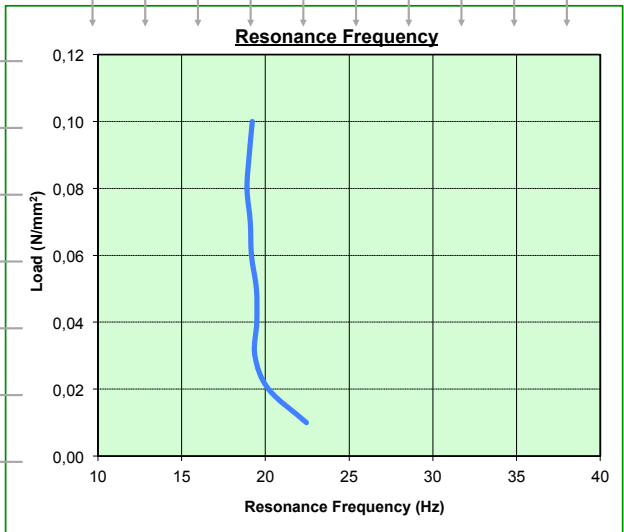
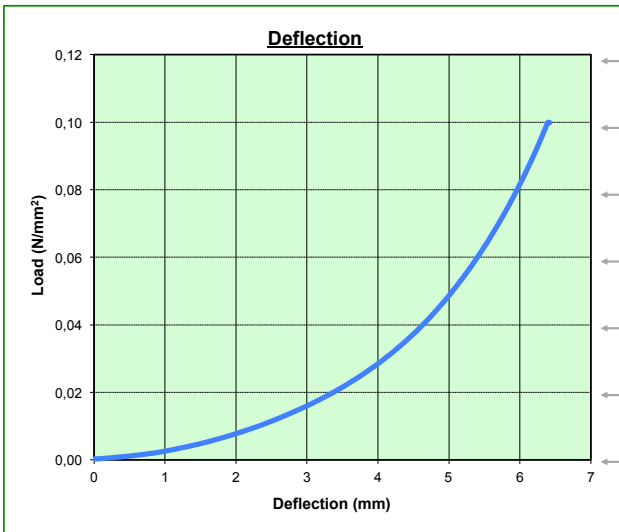
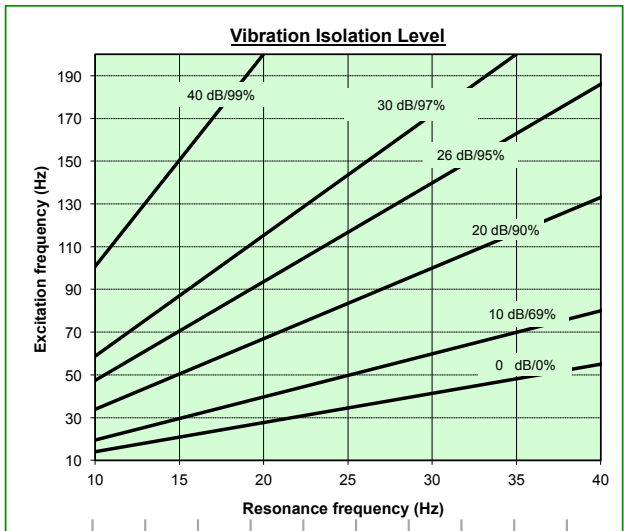
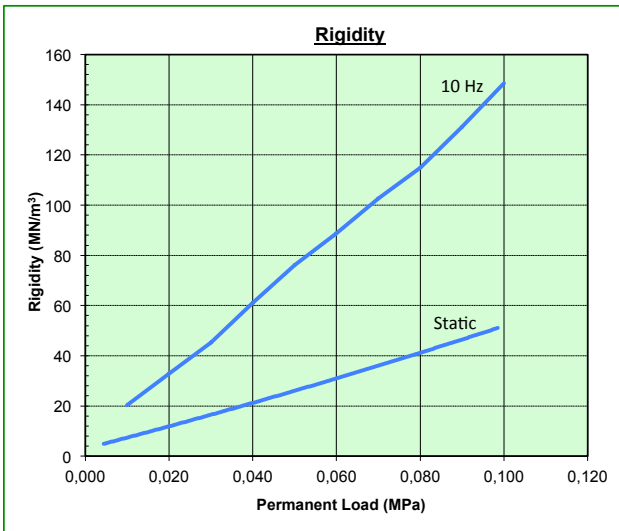


Load Range (MPa)	Static	Total
	0.01 - 0.10	0.30

Rigidity (MN/m³)	Static	Dynamic
	10 - 50	20 - 150

Parameter	Method	Value
Technical reference	-	SonicMat 17-8
Material	-	Resin bonded rubber
Thickness	-	17 mm +/- 0.3 mm
Colour	-	Black
Density	ASTM-F104	650 kg/m ³
Temperature range	Constant	-40°C / +80°C

Parameter	Method	Value
Hardness - Shore	ASTM-D2240	35 - 45 °A
Elongation at break	ISO-37	> 45 %
Tensile strength	ISO-37	> 0.5 MPa
Dynamic Stiffness	0,01 Mpa	19,3 MN/m ³ @ 5 Hz
Dynamic Stiffness	0,01 Mpa	22,7 MN/m ³ @ 20 Hz
Creep @ 0.3 MPa	ISO-8013	< 1 % / decade minutes



The mechanical characteristics presented in this document are based on tests of 200x200mm cross section samples