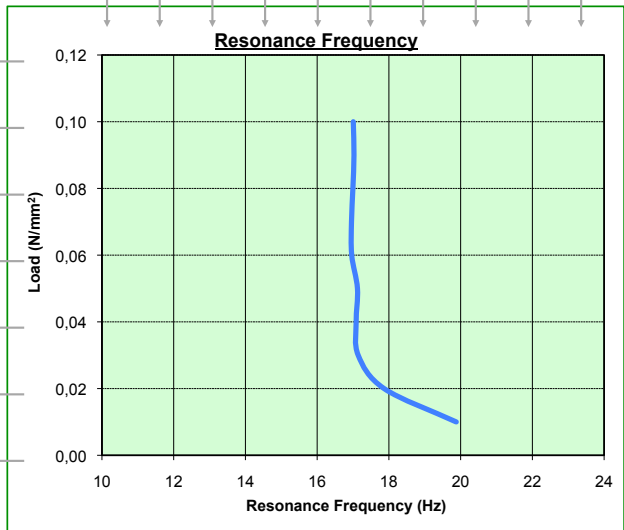
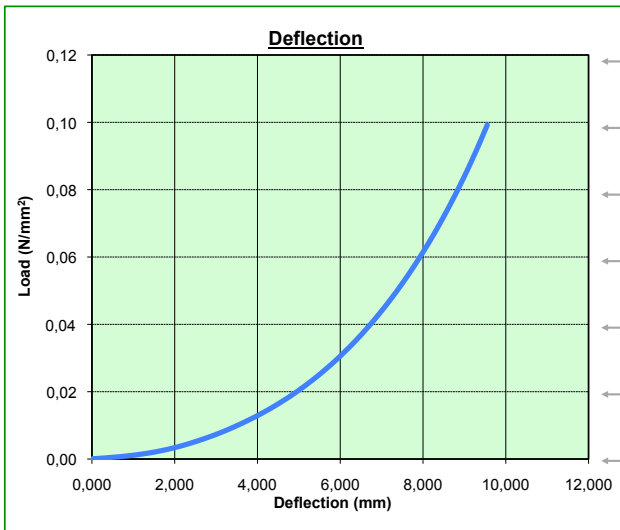
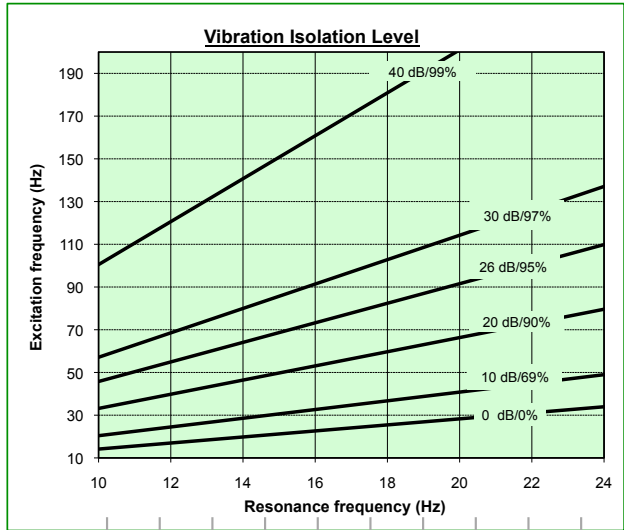
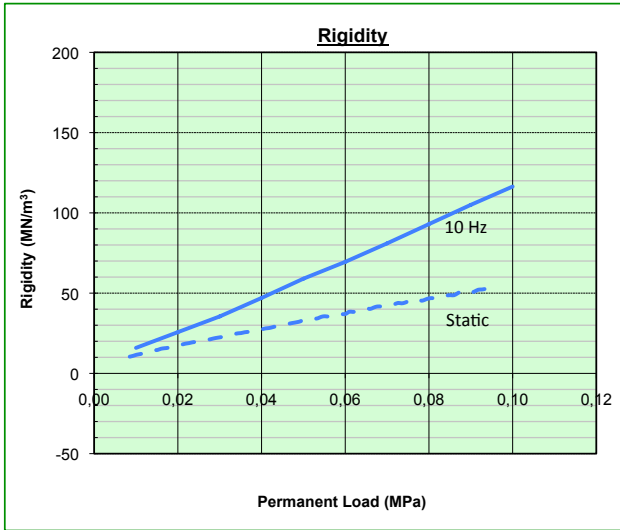


Load Range (MPa)	Static 0.01 - 0.10	Total 0.50
-------------------------	-----------------------	---------------

Rigidity (MN/m³)	Static 10 - 50	Dynamic 15 - 140
------------------------------------	-------------------	---------------------

Parameter	Method	Value
Technical reference	-	SonicMat fiber 20-10
Material	-	Resin bonded rubber
Thickness	-	17 or 20 mm +/- 0.3 mm
Colour	-	Black
Density	ASTM-F104	700 kg/m ³

Parameter	Method	Value
Temperature range	Constant	-40°C / +80°C
Hardness - Shore	ASTM-D2240	35 - 45 °A
Elongation at break	ISO-37	> 45 %
Tensile strength	ISO-37	> 0.5 MPa
Creep @ 0.3 MPa	ISO-8013	< 1 % / decade min



The mechanical characteristics presented in this document are based on tests of 300 x 300 mm samples